

We offer services tailored to the individual needs and requirements of the project coordinators in European research projects, particularly in the 7th Framework Programme of the EU. We can assume project management in its entirety or just take care of certain individual tasks such as the following services:

- ★ Information on EU grants and funding
- ★ Strategic planning
- ★ Assistance in establishing an international consortium
- ★ Assistance in writing proposals
- ★ Compiling the proposal documents
- ★ Assistance in negotiations with the European Commission and the project partners
- ★ Assistance in administrative tasks
- ★ Organisation and facilitation of project meetings, workshops and conferences
- ★ Monitoring of contractual obligations and finances



Jörn Möltgen
University of Duisburg-Essen
European Project Office Rhein-Ruhr
c/o Science Support Centre
Universitätsstr. 2
D-45141 Essen
Phone +49 (0)201 183-2941
Fax +49 (0)201 183-4694
joern.moeltgen@uni-due.de

Berit Schlierkamp
University of Duisburg-Essen
European Project Office Rhein-Ruhr
c/o Science Support Centre
Universitätsstr. 2
D-45141 Essen
Phone +49 (0)201 183-6274
Fax +49 (0)201 183-4694
eporr@uni-due.de



Dorota Pawlucka
TU Dortmund University
European Project Office Rhein-Ruhr
c/o Fakultät Bio- und Chemieingenieurwesen
Emil-Figge-Str. 68
D-44227 Dortmund
Phone +49 (0)231 755-2599
Fax +49 (0)231 755-3007
eporr@tu-dortmund.de

» www.eporr.de

EPORR

EUROPEAN
PROJECT
OFFICE
RHINE-
RUHR

Our services and competences

- ★ Coordination of reporting to the European Commission
- ★ Set-up and maintenance of communication structures and project websites
- ★ Risk and conflict management
- ★ IPR and patent management

Contact

EPORR is co-financed by the Ministry of Innovation, Science and Research of the German State of North Rhine-Westphalia.

Ministerium für Innovation,
Wissenschaft und Forschung
des Landes Nordrhein-Westfalen



Management for successful research

LOCATIONS
DUISBURG-ESSEN
DORTMUND

EPORR is an alliance of two local European Project Management Offices at the University of Duisburg-Essen and TU Dortmund University.

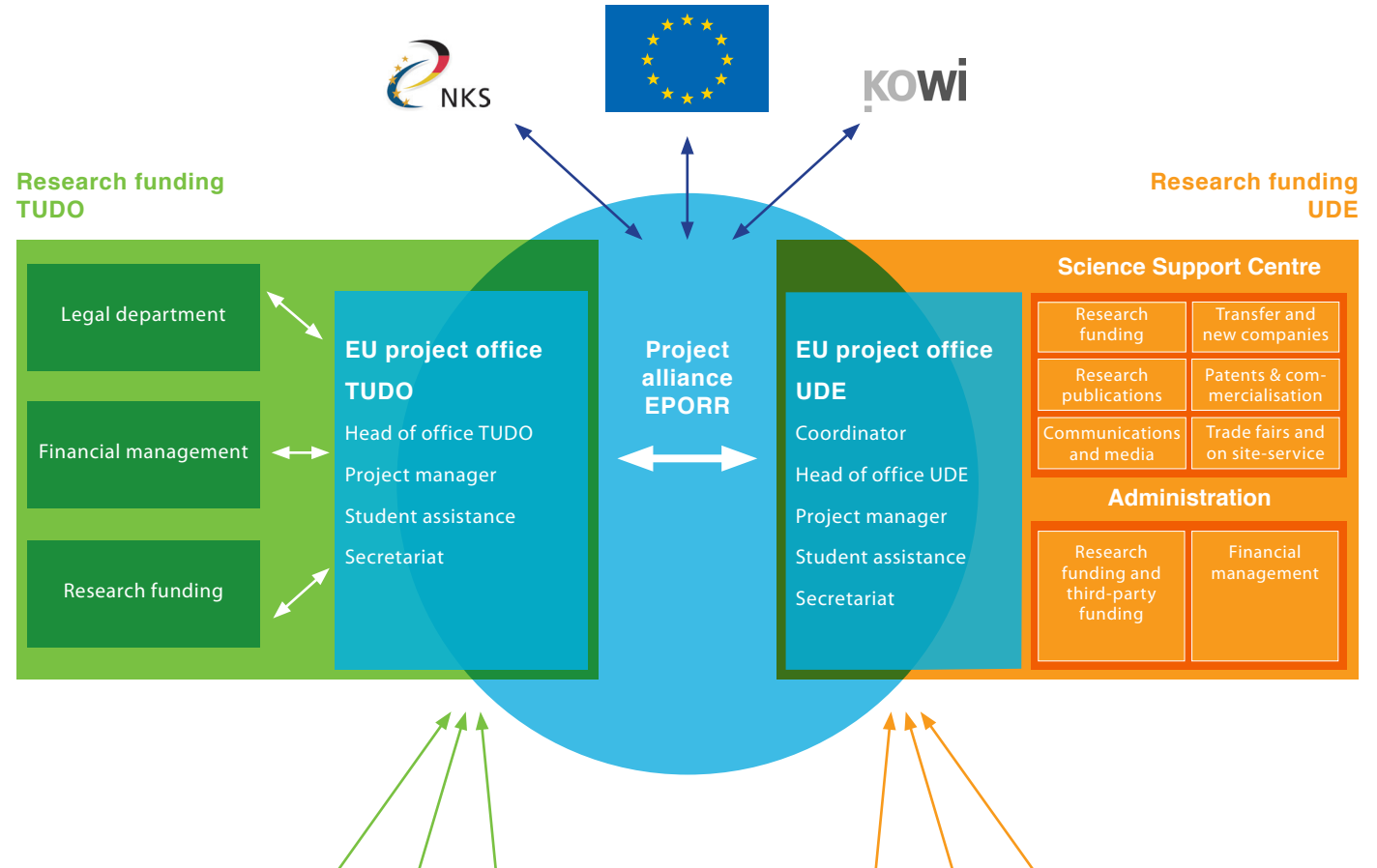
Taking advantage of our complementary strengths and competences, we offer the researchers of both universities services in planning and executing European cooperation projects over the whole life cycle of the project. We assume strategic, administrative and organisational tasks in order to leave them free for research. In this way, we contribute to overcoming barriers to participation in the Framework Programmes, thereby making our two universities more competitive.

The project offices at both universities are embedded in existing structures.

Close networking takes place

internally:

- ★ among the two offices
- ★ with their respective administration



European Project Office Rhine-Ruhr

and externally:

- ★ with the national contact points (NKS)
- ★ the European Commission and
- ★ the project partners

